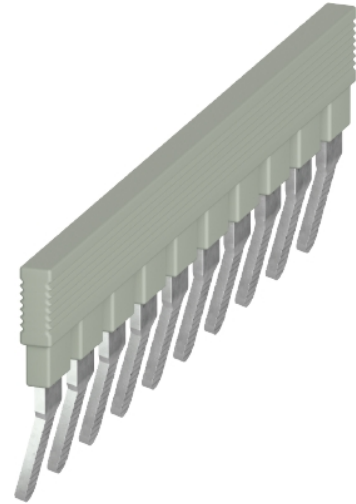


Data sheet

Commercial Art.No.: 0D.S17.4027.0

insert bridge IVB WTN 16-10 IN

insert bridge IVB WTN 16-10 IN modular spacing 12 mm, insulated yes, number of poles 10, color grey, height 34.6 mm, mounting method screwable, inflammability class of insulation material acc. with UL94 V0



Commercial Art.No.	0D.S17.4027.0
EAN	4049088723834
Order Unit	100

Technical data

general

color	grey
inflammability class of insulation material acc. with UL94	V0
width/grid dimension	118 mm
length	4.5 mm
modular spacing	12 mm
number of bridged clamps	10
mounting method	screwable
insulated	yes
model	cross connector
height	34.6 mm

classification

ETIM 9.0	EC000489
----------	----------

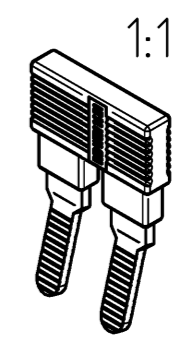
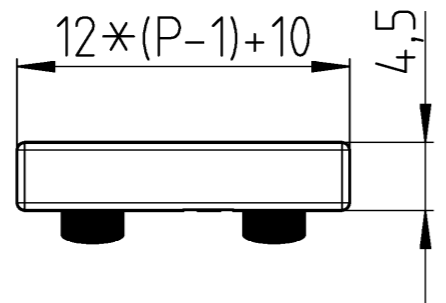
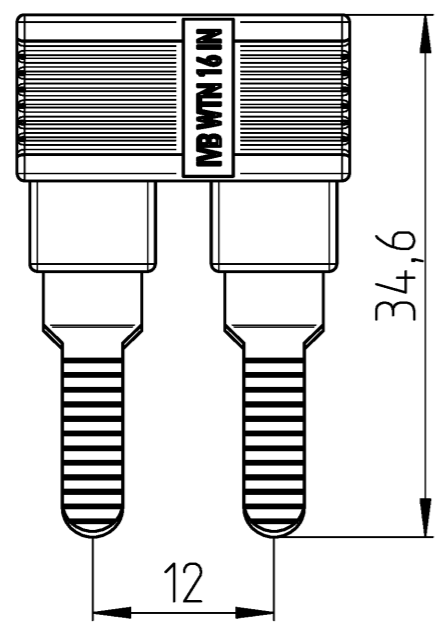
product compliance

REACH-SVHC conformity status	compliant
------------------------------	-----------

A
 © Alle Rechte vorbehalten
 © All rights reserved
 Vertraulichkeitsklasse
 Confidentiality Class: Vertraulich
 Confidential

B
 These dimensions will be especially checked at delivery
 Only inspection dimensions
 With /E marked dimensions are only valid for internal use

C
 Diese Maße werden bei Abnahme besonders geprüft
 Ausschließlich Prüfmaße
 Mit /E gekennzeichnete Maße sind nur für interne Zwecke gültig



Weitere Daten siehe KATALOG oder eKatalog
 additional data see CATALOG or eCATALOG
www.wieland-electric.com
eshop.wieland-electric.com

Tolerierung Size ISO 14405 ☺ / Tolerance system Size ISO 14405 ☺. (This ISO-standard describes the envelope principle. According to the envelope principle the deviations of form and parallelism are limited by the size tolerances).		ja/yes <input checked="" type="checkbox"/> Stoffverbots- und Deklarationsliste nach WN 5020.010 ist einzuhalten. Conformity with Wieland document WN 5020.010 e (list of prohibited / declarable hazardous substances) to be declared!	
Freitoleranz nach General tolerance	CAD - Zeichnung, keine manuellen Änderungen CAD - drawing, no manual modifications allowed	1. Verwendung: First Use:	Blatt: 1 von 1 Sheet: 1 of 1
	Werkstoff / Material	Tag/Date	Name
		gezeichnet drawn	17.10.2025 Eichhorn N.
	Maßstab / Scale	T 0D.S17.3227.0 13K a	
	2:1	Elektronische Freigabe Electronic Release	
	Vol. mm ³ / Of. / Srf. mm ²	Ersatz für / Replacement for:	
		Type	Benennung/Title
		EINLEGEBRUECKE connection plug	
	Änderung / Revision	wieland	

Bestell-Nr. /order no.	Polzahl P /number of poles P	Typ /type	Farbe /colour	VPE: packaging unit:
0D.S17.3227.0	2	IVB WTN 16-2 IN	grau / grey	100 (a)
0D.S17.3327.0	3	IVB WTN 16-3 IN	grau / grey	
0D.S17.4027.0	10	IVB WTN 16-10 IN	grau / grey	